

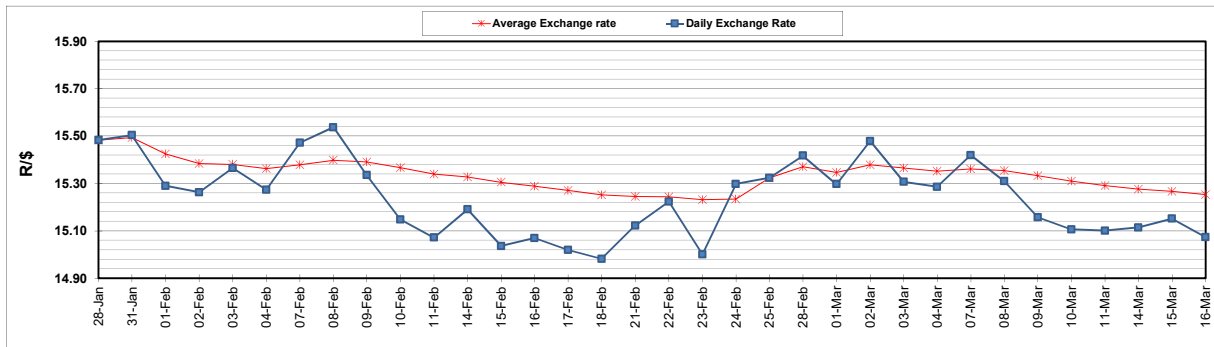
	PETROL 95 ULP	PETROL 93 ULP & LRP	DIESEL 0.05%	DIESEL 0.005%	ILL. PAR.
GAUTENG PUMP PRICE (SA c/l) AS FROM 02/03/2022	2,160.000	2,135.000	-	-	-
WHOLESALE PRICE (SA c/l) AS FROM 02/03/2022	-	-	1,948.880	1,955.280	1,318.688
SINGLE NATIONAL MAXIMUM RETAIL PRICE	-	-	-	-	1,690.000
BASIC FUEL PRICE - 16/03/2022 (SA c/l)	1,181.985	1,157.060	1,222.417	1,243.405	1,180.793
PRESS RELEASE CONTRIBUTION TO BFP 02/03/2022 - 16/03/2022 (SA c/l)	1,100.270	1,085.270	1,107.630	1,114.030	1,097.128
UNIT OVER/(UNDER) RECOVERY - 16/03/2022 (SA c/l)	(81.715)	(71.790)	(114.787)	(129.375)	(83.665)
AVERAGE BASIC FUEL PRICE 25/02/2022 - 16/03/2022	1,277.789	1,255.074	1,361.699	1,381.330	1,310.599
AVERAGE UNIT OVER/(UNDER) RECOVERY 25/02/2022 - 16/03/2022	(205.514)	(197.798)	(281.712)	(295.800)	(239.400)

ANALYSIS MOVEMENT OF AVERAGE OVER/(UNDER) RECOVERY

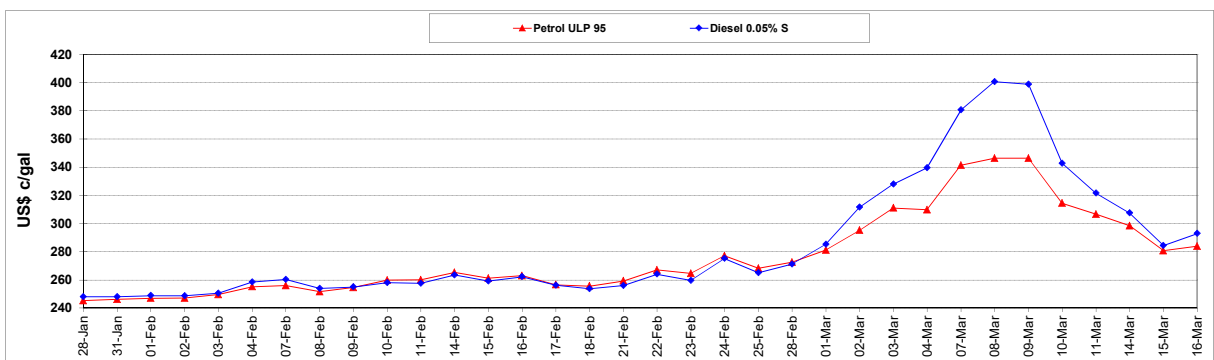
	PETROL 95	PETROL 93	DIESEL 0.05%	DIESEL 0.005%	ILL. PAR.
- MOVEMENT IN INTERNATIONAL PRODUCT PRICES	(203.930)	(196.243)	(280.025)	(294.088)	(237.776)
- MOVEMENT IN EXCHANGE RATE	(1.583)	(1.555)	(1.687)	(1.712)	(1.624)
AVERAGE UNIT OVER/(UNDER) RECOVERY 25/02/2022 - 16/03/2022	(205.514)	(197.798)	(281.712)	(295.800)	(239.400)

R/\$ EXCHANGE RATE - (R/\$15.0735 - 16/03/2022)

EXCHANGE RATE USED IN BASIC FUEL PRICE



INTERNATIONAL PRODUCT PRICES OF BASKET USED IN BASIC FUEL PRICE



BASIC FUEL PRICE IN SA CENTS PER LITRE

